



# 2012



**VÄSTERVIK FISHING CAMP**

**PRICE LIST**

Owned by the same  
Families Since 1968



1 Week /  
7 Nights **7.590 SEK**

Doubleroom incl. Breakfast, afternoon  
coffe, wi-fi, sport and moviechannels



A Great Hotel is more than a few rooms, a reception and a breakfast room...

# Välkommen till Centralhotellet

önskar familjerna Fornell & Kjellén med personal



Centralhotellet combines the large Hotel's resources in the form of comfort and High Standards with the smaller Hotel's charm and solicitude



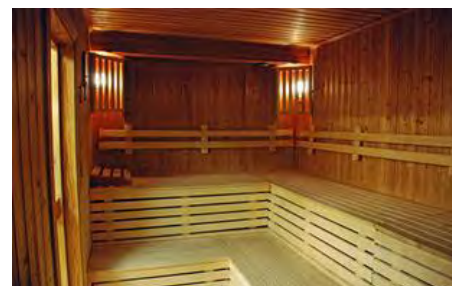
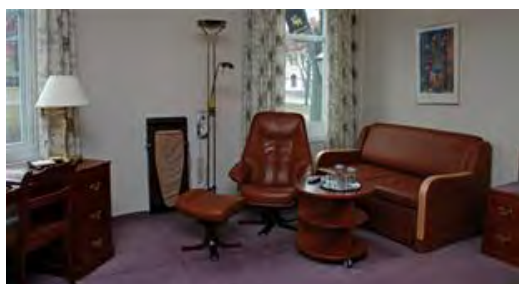
Our rooms are very charming  
with high comfort standard



Västerviks  
BEST  
Hotel Rooms.



Every room have a bathroom,  
radio, satellite TV, free sports  
and moviechannels, wireless  
internet, hairdryer, clothes  
press, iron, minibar and a sa-  
fe-deposit box



Period of validity: April 1st – May 31st and August 15th – October 31st 2012

Centralhotellet AB  
Brunnsgatan 23  
593 22 VÄSTERVIK

**your hotel™**  
SWEDEN

Telefon: +46 490 895 50  
[www.centralhotellet.com](http://www.centralhotellet.com)  
[info@centralhotellet.com](mailto:info@centralhotellet.com)

## Chalet Vidö - Recommended for 2 – 3 Pers.



24 m<sup>2</sup> 3 beds, 2 rooms – bedroom with bunks bed and single bed. A convertible sofa in the living room with coffee table. Kitchenette with hotplates, microwave, refrigerator, dining table and chairs, TV, Shower/Toilet. Outside sitting area with furniture.



### Price Including:

Accommodation [*Bed line extra 150 SEK / Pers.*]  
Fishing Boat 4,65m long, 15hp 4-stroke SUZUKI  
Gasoline for All Fishing Day(s)  
Boat Insurance  
GPS/Sonar Navigation System  
Life Jackets  
Sea Chart  
Fishing Introductions  
Fishing Permit

### Total Price in SEK

Chalet Vidö	One Boat 15hp
1 Week	13.730:-
10 Days	19.300:-
2 Weeks	26.600:-

## Chalet Ekö - Recommended for 4 Pers.



34 m<sup>2</sup> 4 beds. 3 rooms, 2 bedrooms with 1 bunk bed each. Living room with sofa, table. Kitchen area with stove, microwave, sink, refrigerator and kitchen table. Washroom with shower and toilet. Porch with outdoor furniture.



### Price Including:

Accommodation *[Bed line extra 150 SEK / Pers.]*  
**Fishing Boat 4,65m long, 15hp 4-stroke SUZUKI**  
**Gasoline for All Fishing Day(s)**  
 Boat Insurance  
 GPS/Sonar Navigation System  
 Life Jackets  
 Sea Chart  
 Fishing Introductions  
 Fishing Permit

### Total Price in SEK

Chalet Ekö	1 Boat 15hp	2 Boats15hp
1 Week	14.430:-	22.630:-
10 Days	20.300:-	31.700:-
2 Weeks	28.060:-	43.660:-

## Chalet Dagö - Recommended for 4 Pers.



35 m<sup>2</sup> 4 beds. Sleeping loft with one bedroom with two single beds (steep stairs). One bedroom with a double bed on the first floor. Living room with sofa and coffee table. Table and chairs. Kitchenette with stove, sink, filter coffee maker, refrigerator, microwave oven. Shower/toilet. Outside sitting area with furniture.



### Price including:

Accommodation [*Bed line extra 150 SEK / Pers.*]  
**Fishing Boat 4,65m long, 15hp 4-stroke SUZUKI**  
**Gasoline for All Fishing Day(s)**  
 Boat Insurance  
 GPS/Sonar Navigation System  
 Life Jackets  
 Sea Chart  
 Fishing Introductions  
 Fishing Permit

### Total Price in SEK

Chalet Dagö	1 Boat 15hp	2 Boats 15hp
1 Week	14.430:-	22.630:-
10 Days	20.300:-	31.700:-
2 Weeks	28.060:-	43.660:-

## Chalet Ösel 1 - Recommended for 6 Pers.



59 m<sup>2</sup> 6 beds. Rustic log cabin overlooking the sea. Two floors. Two bedrooms with two single beds in each on the upper floor. (steep stairs). One bedroom with two single beds on the first floor. Living room with sofa and coffee table. Table and chairs. Kitchenette with cooker, sink, coffee machine, fridge, freezer and microwave. WC, shower. Veranda with garden furniture.



Price including:

Accommodation [*Bed line extra 150 SEK / Pers.*]  
**Fishing Boat 4,65m long, 15hp 4-stroke SUZUKI**  
**Gasoline for All Fishing Day(s)**  
 Boat Insurance  
 GPS/Sonar Navigation System  
 Life Jackets  
 Sea Chart  
 Fishing Introductions  
 Fishing Permit



**Total Price in SEK**

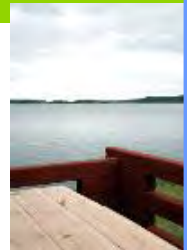
Chalet ÖSEL 1	1 Boat 15hp	2 Boats 15hp	3 Boats 15hp
1 Week	15.130:-	23.330:-	31.530:-
10 Days	21.300:-	32.700:-	44.100:-
2 Weeks	29.460:-	45.060:-	60.660:-

## Chalet Ösel 2 - Recommended for 6 Pers.



59 m<sup>2</sup> 6 beds. Ösel 2 chalet in a unique setting close to the sea. Two floors. Two bedrooms with two single beds in each on the upper floor. (steep stairs). One bedroom with two single beds on the first floor.

Living room with sofa and coffee table. Table and chairs. Kitchenette with cooker, sink, coffee machine, fridge, freezer and microwave. WC, shower. Veranda with garden furniture.



Price including:

- Accommodation [*Bed line extra 150 SEK / Pers.*]
- Fishing Boat 4,65m long, 15hp 4-stroke SUZUKI
- Gasoline for All Fishing Day(s)
- Boat Insurance
- GPS/Sonar Navigation System
- Life Jackets
- Sea Chart
- Fishing Introductions
- Fishing Permit



**Total Price in SEK**

Chalet ÖSEL 1	1 Boat 15hp	2 Boats15hp	3 Boats15hp
1 Week	15.830:-	24.030:-	32.230:-
10 Days	22.300:-	33.700:-	45.100:-
2 Weeks	30.860:-	46.460:-	62.060:-

## BOAT RENTAL PRICE\*

DAYS	15 <sub>HP</sub>	25 <sub>HP</sub>	DAYS
	SEK	SEK	
14	16.600:-	23.700:-	14
13	15.600:-	22.200:-	13
12	14.500:-	20.800:-	12
11	13.450:-	19.450:-	11
10	12.400:-	18.000:-	10
9	11.400:-	16.500:-	9
8	10.300:-	15.000:-	8
7	9.200:-	13.300:-	7
6	8.200:-	11.800:-	6
5	7.100:-	10.050:-	5
4	5.900:-	8.250:-	4
3	4.500:-	6.400:-	3
2	3.250:-	4.500:-	2
1	1.950:-	2.650:-	1

\*All Inclusive: Insurance, Gasoline for All Fishing Day(s), GPS/Sonar, Sea Charts

### Safety Deposit



**3.000 SEK** per Boat with **15HP** outboard and the Boat Equipment.

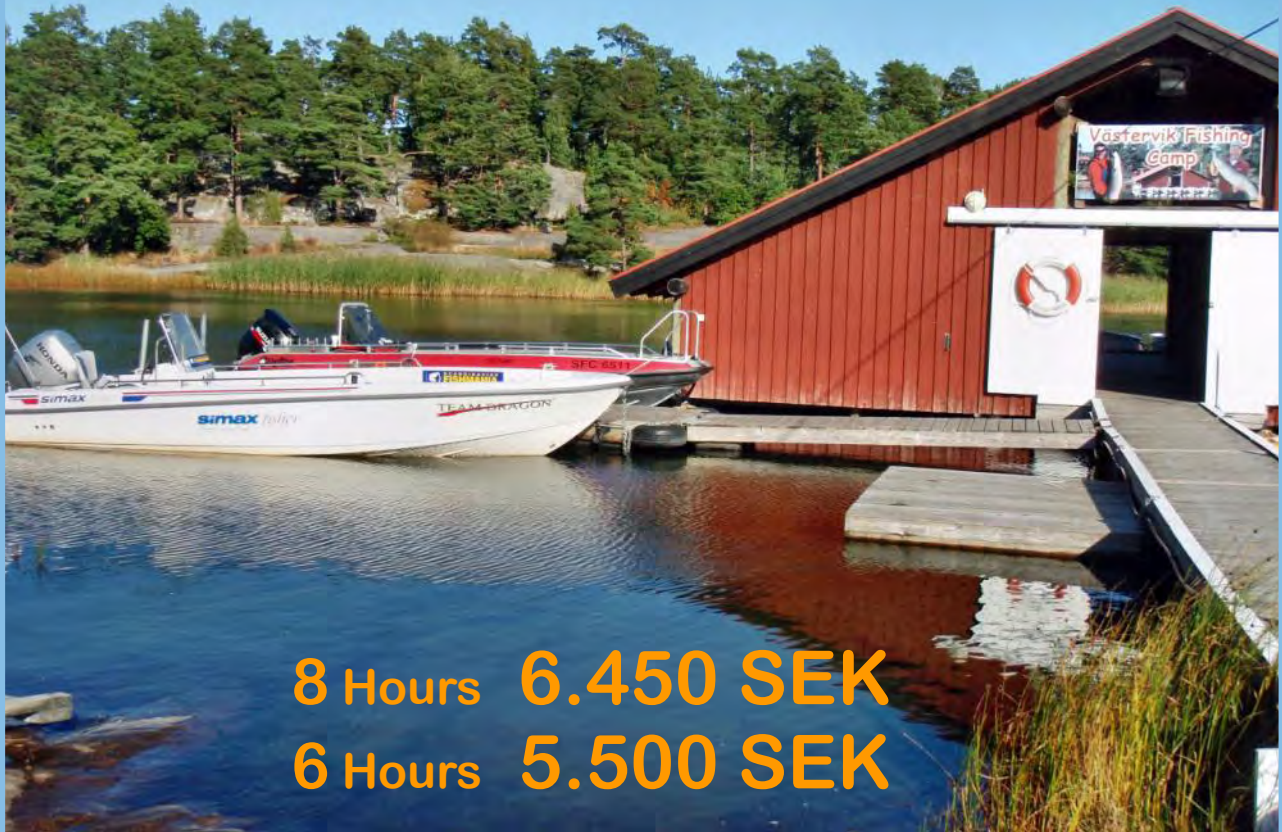
For 2 or more Boats Deposit is 3.000 SEK each.

**5.000 SEK** per Boat with **25HP** outboard and the Boat Equipment.

**25HP Boats** - can be booked by guests with experience in boat driving only.

Obligatory to be Paid if the Boat are damaged or propeller is broken.

# FISHING GUIDE



**8 Hours 6.450 SEK**  
**6 Hours 5.500 SEK**

We can Guide up to 3 Persons on one Boat.

All Day FISHING GUIDE Included:  
Live Jackets, Overalls, Complete Fishing Equipment,  
Dinner (Food and Drink for All)

## Guide Boats:

**Buster Magnum 620**  
150HP 4-stroke engine



**Simax Fisher 605**  
140HP 4-stroke engine



## Fishing equipment

### Complete Fishing Equipment for Rent

Spinning rod, reel, baits, wire tackles, landing net, unhooking mat and tools, weigh sling, measuring tape and scale.

Baits are chosen and are suitable for a season.

For more Information ask the Camp Staff or call.

## Supplements

### Electric-Driven Engine

350 SEK / Day or

1.500 SEK / Week - incl. Battery

Charging station for el-driven engines is available at the Fishing Camp. Guests are responsible to keep batteries during the stay.



## Place in Harbor

Guests with his own Boat can Pay **100 SEK / Day** for a Place in the Harbor.

Please note that the Place **must be booked in advance** and it is possible to book only if **FREE** places are available.

Fee must be Paid directly in the Camp.

For booking please call the camp staff.



## VÄSTERVIK FISHING CAMP

Tel. +46 (0) 490 170 70 Camp Office

Mob. +46 (0) 702 026 587 SERVICE

[www.vastervikfishing.com](http://www.vastervikfishing.com) - [vastervikfishing@post.com](mailto:vastervikfishing@post.com)